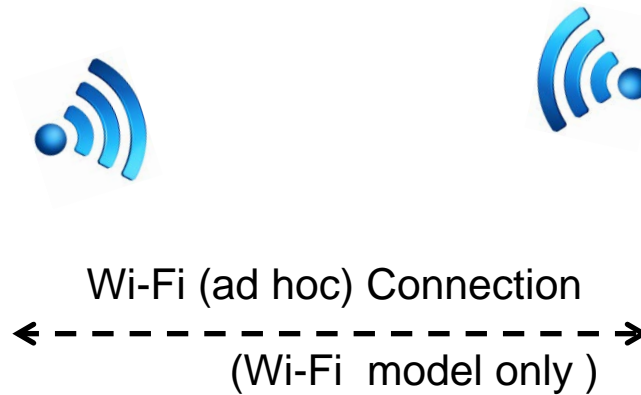


» Connection by using “ad hoc mode”

- This ad hoc Connection is for iPhone/ iPad. (Android OS can not do this connection)
- After finish ad hoc Connection, return to original setting. It will not return to previous LAN Mode setting automatically.



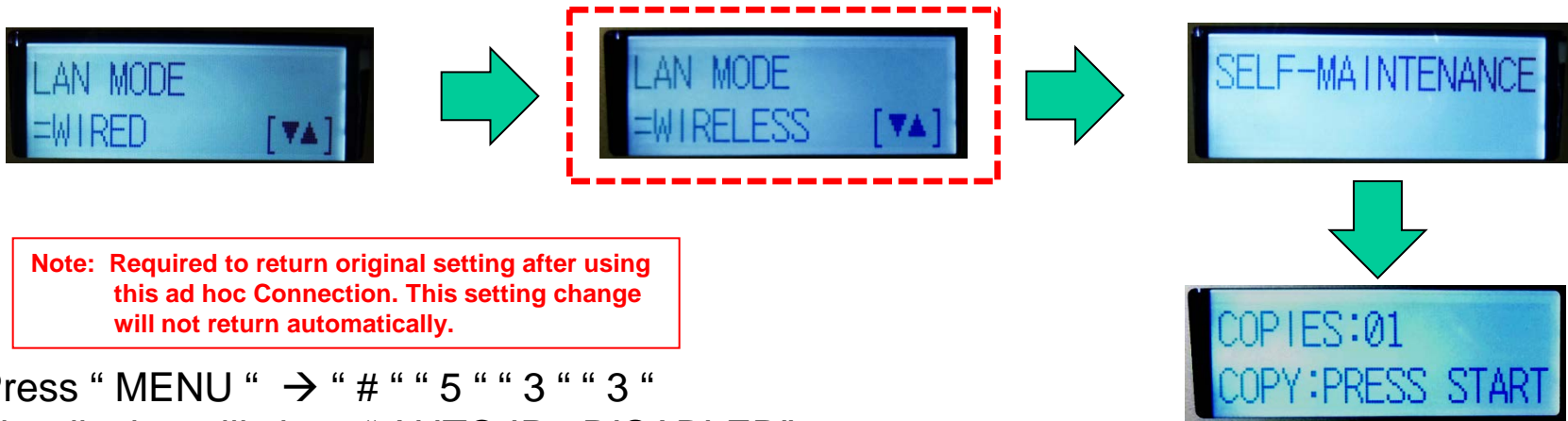
Mobile Device



Manual Wi-Fi Connection setting through “Operation Panel” on the Machine

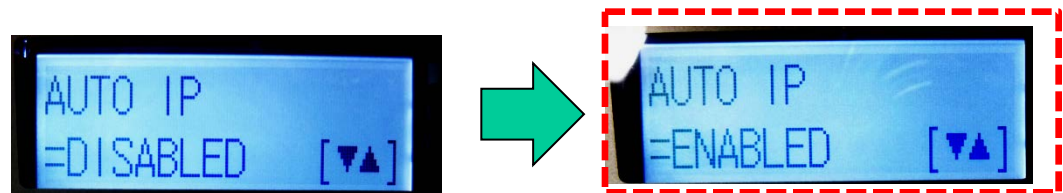
Machine Setting

1. Press "MENU" → "# " " 5 " " 8 " " 0 "
The display will show " LAN MODE = WIRED "
Press " ▲ " button to select " **WIRELESS** "
Press " SET " button.
Then the machine will go into the Self-Maintenance Mode.



Note: Required to return original setting after using this ad hoc Connection. This setting change will not return automatically.

2. Press " MENU " → " # " " 5 " " 3 " " 3 "
The display will show " AUTO IP= DISABLED "
Press " ▲ " button to select " ENABLED "
Press " SET " button.



Note: Required to return original setting after using this ad hoc Connection. This setting change will not return automatically.



Machine Setting

3. Press " 5 " " 8 " " 5 "

The display will show " CONFIGURATION PRESS SET "

Press " SET " button.

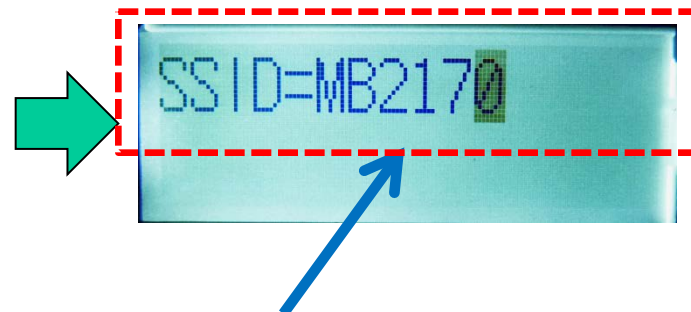


4. The display will show " SSID= "

* Input the SSID name that you want to set up on this machine by using 10 key.

* For easy searching of the machine, enter as " SSID= MB2170 "

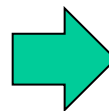
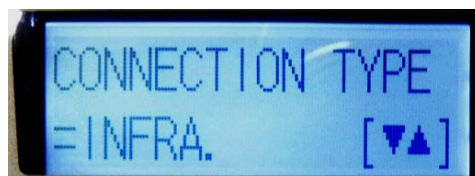
Then press " SET " button.



Example: For easy searching, enter the Machine name from 10 key.

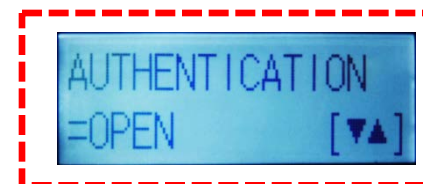
Machine Setting

5. The display will show “ CONNECTION TYPE= INFRA. “
 Press “ ▲ ”button to select “ AD HOC ”
 Press “ SET ” button.



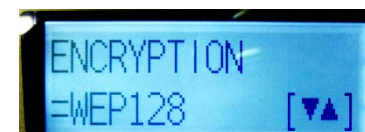
Note: Required to return original setting after using this ad hoc Connection. This setting change will not return automatically.

6. The display will show “ AUTHENTICATION= OPEN “
 Press “ SET ” button.



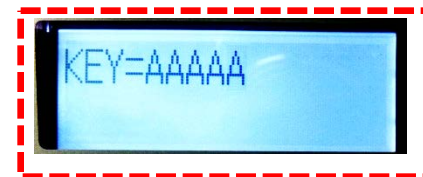
7. The display will show “ ENCRPTION= WEP128 “
 Press “ ▲ ” button to for your convenience seting.

- * ENCRPTION= DISABLED : No need to enter Password
- * ENCRPTION= WEP64 : set Password with 5 digit (xxxxx)

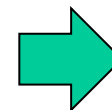
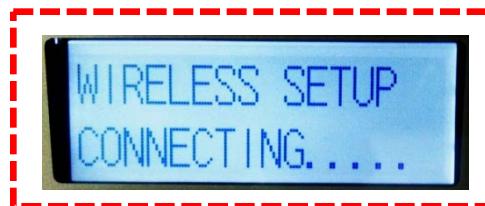


» Machine Setting

8. Then press “ SET “ button and the machine will show “ KEY= ”. Please proceed to input the password.
Ex.) AAAAA (in case ENCRPTION= WEP64)



9. Then press “ SET “ button and the machine will show “ WIRELESS SETUP CONNECTING...”



*After finish Mobile Device operation (Operation “13” on page 8), the LCD on the machine will change from “ CONNECTING... “ to “CONNECTED”.

10. Bring your Mobile Device to search the Wi-Fi signal which you put the name at SSID name setting (example: MB2170)

* If you set the Password, please enter the password accordingly.
(example: AAAAA)

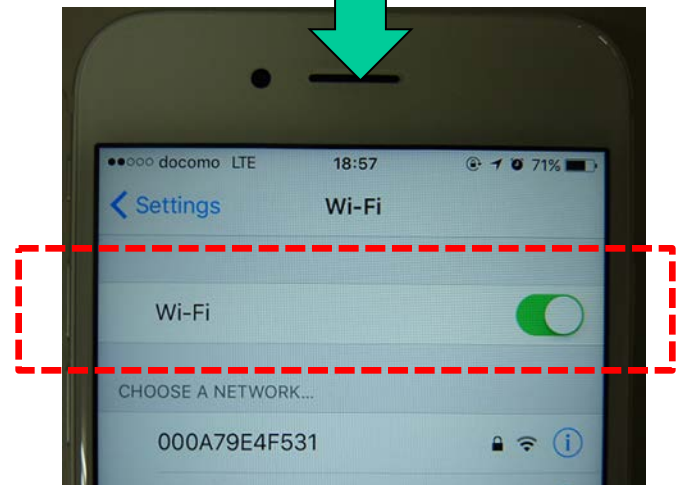
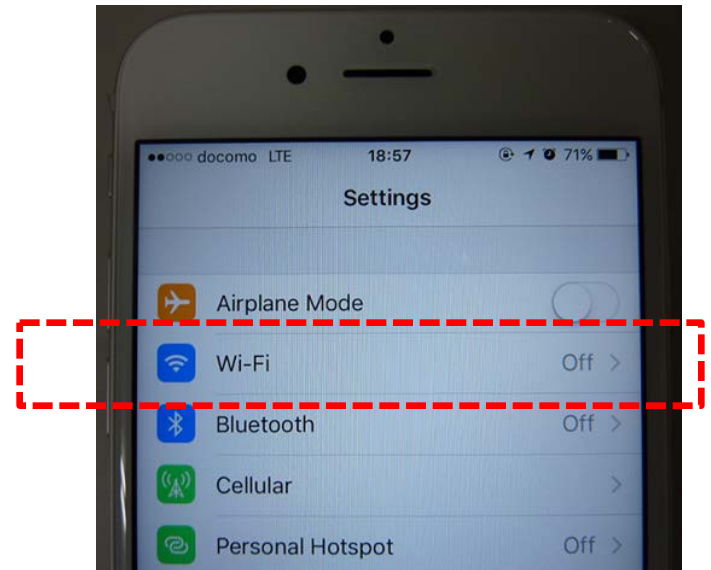
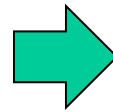
*For the detail setting on the Mobile Device, please proceed to refer from next page.

» Mobile Device Setting

11. Set “Wi-Fi” to ON setting with your Mobile Device.

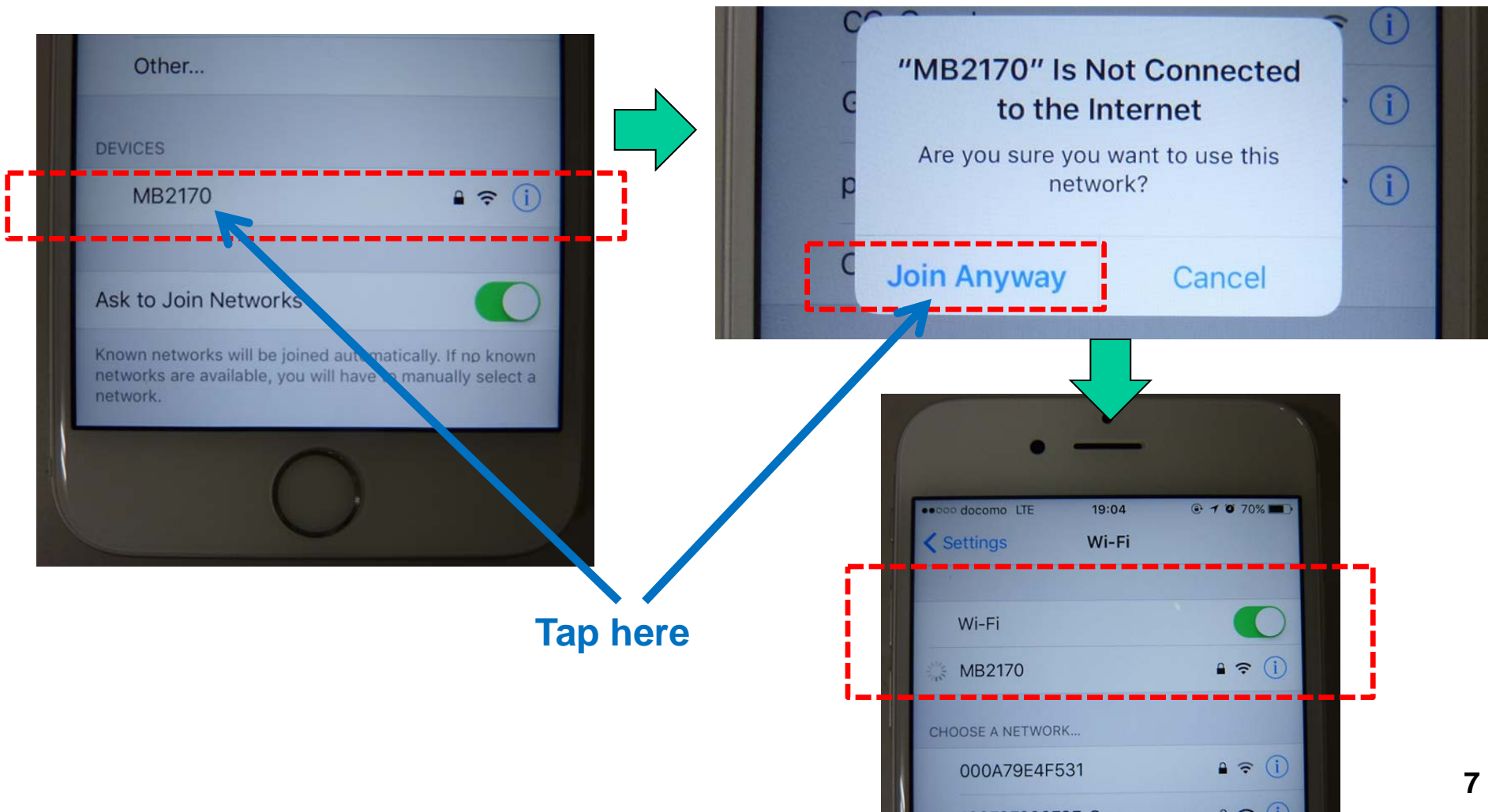


Double-tap this “setting” Icon and set “Wi-Fi” from off to ON



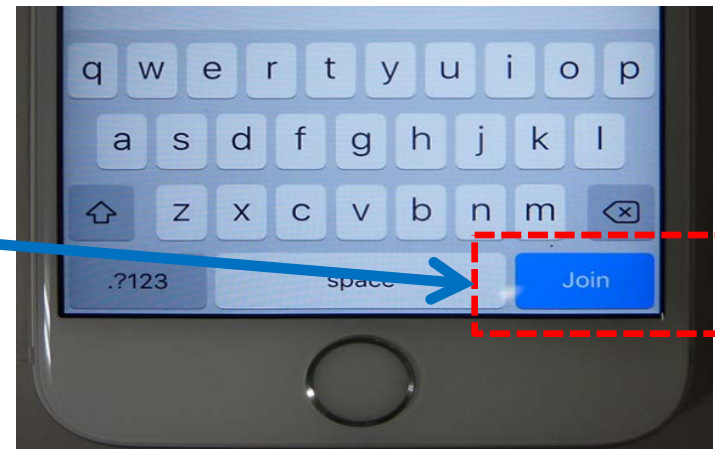
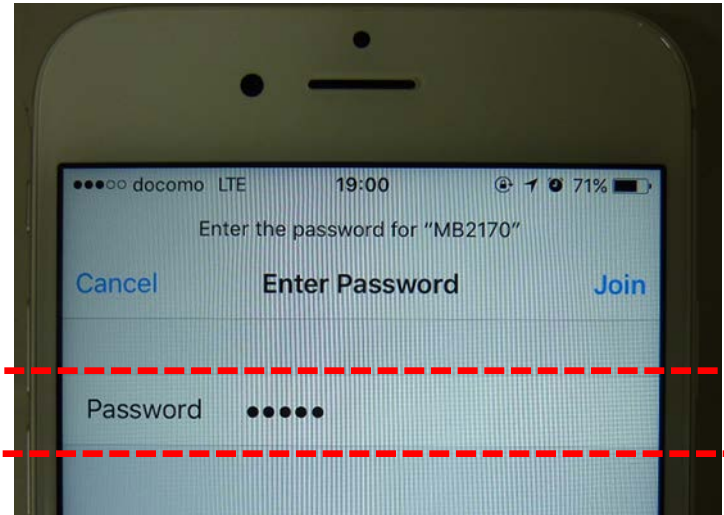
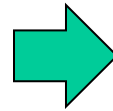
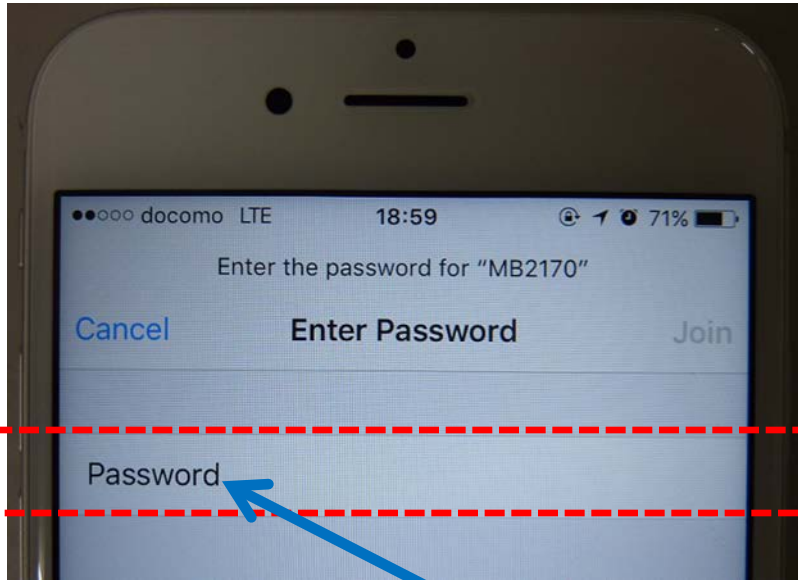
» Mobile Device Setting

12. Tap the “MB2170” then tap “Join Anyway” for proceeding the connection.



» Mobile Device Setting

13. Then you see “Enter Password” on the LCD screen. Proceed to input the same Password here Ex.) AAAAAA
And tap “Join” to proceed connection.

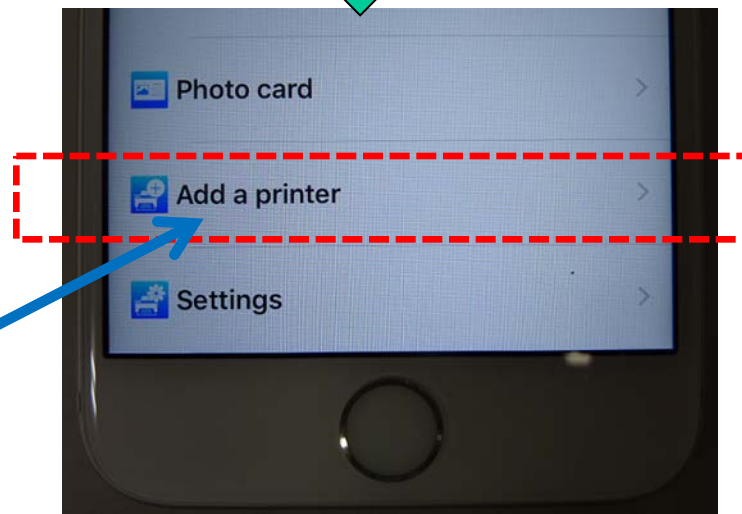
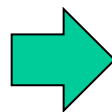
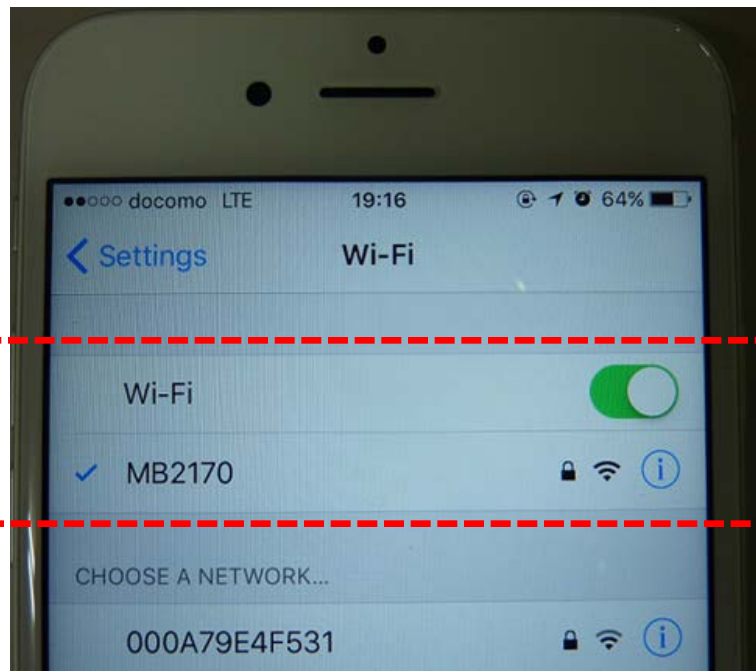


Tap here

» Mobile Device Setting

14. Confirm the connection by checking the LCD screen as below.
Then activate the “Mobile Print” by double-tapping the Icon and tap “Add a printer” from main menu.

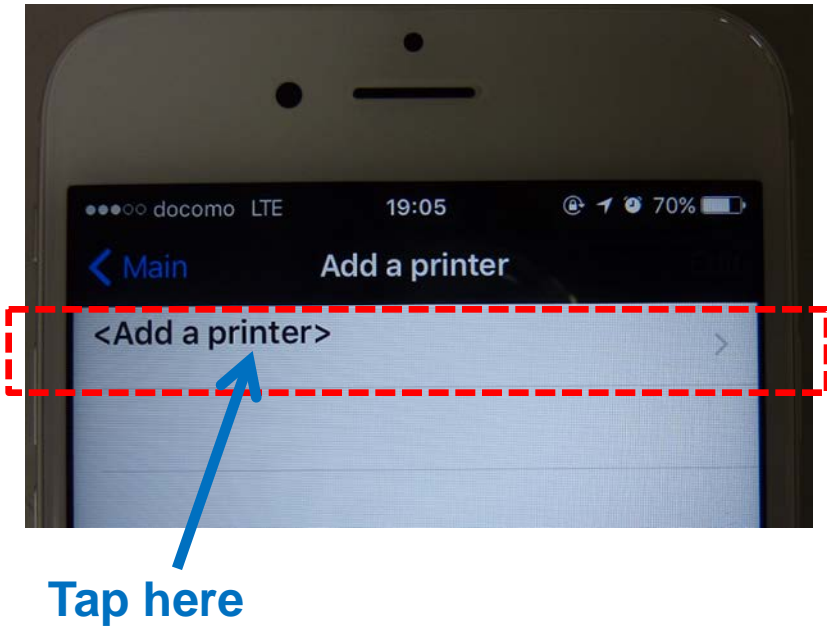
Double-tap
here



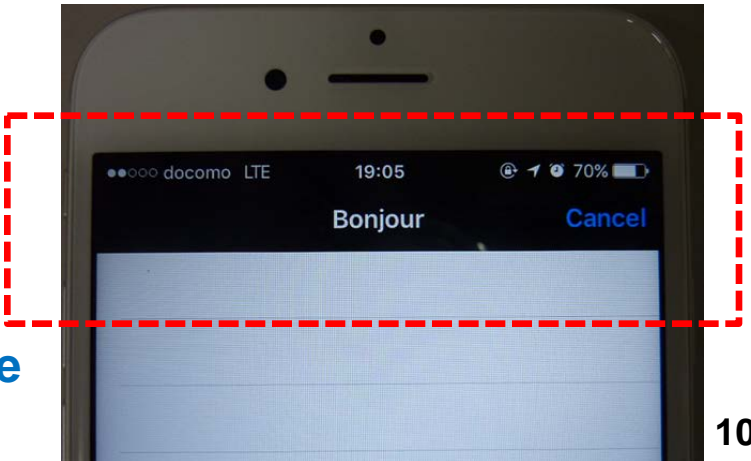
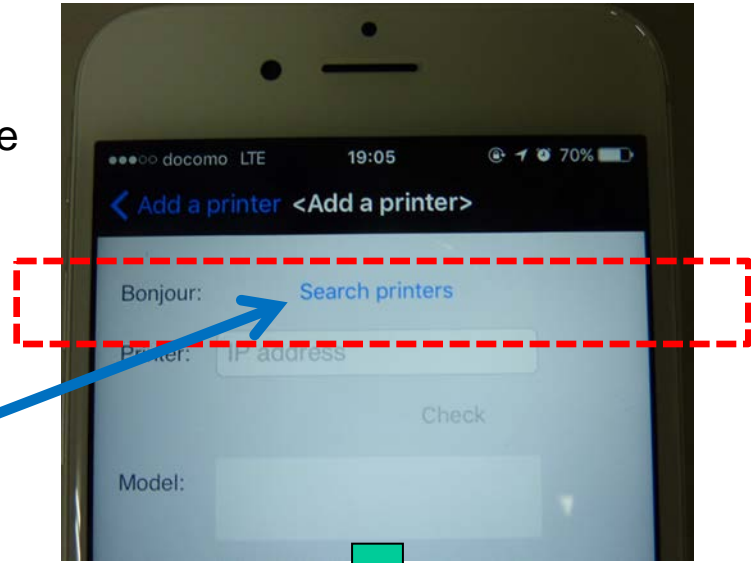
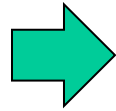
Tap here

>> Mobile Device Setting

15. Tap “<Add a printer>”.
Then proceed to tap “Search printers”
After you see “Bonjour” screen, please wait for a while
until the Mobile Device find the Printer.



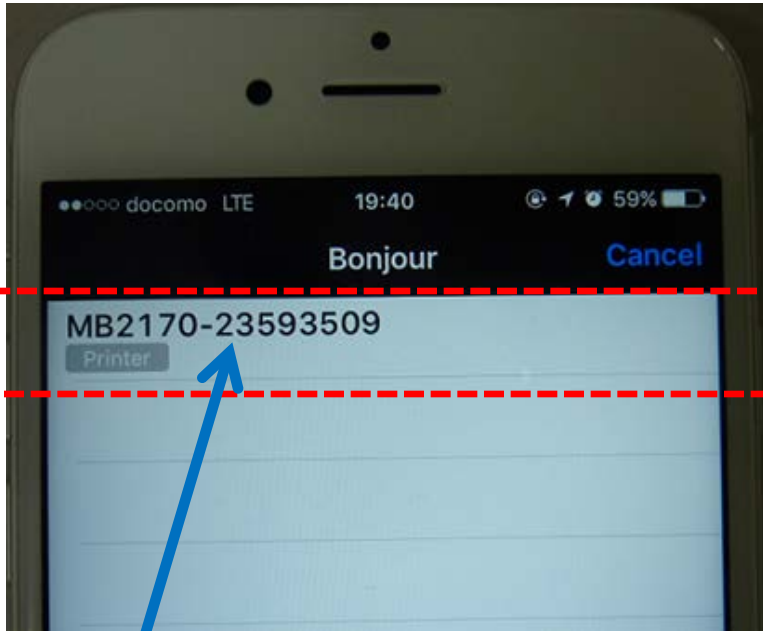
Tap here



Wait for a while
Until the Mobile Device
find the Printer

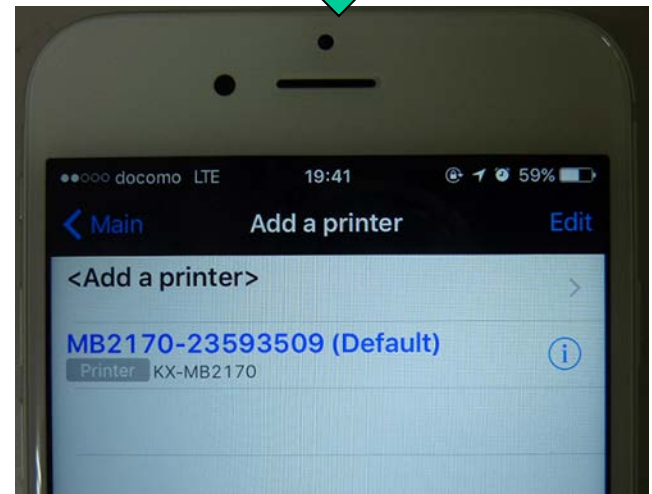
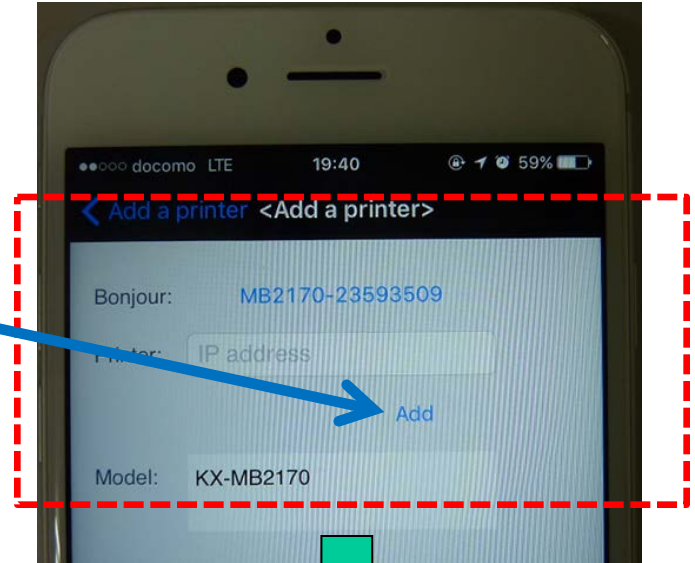
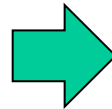
» Mobile Device Setting

- 16. Tap the found printer name.
Ex.) MB2170-23593509
Then Proceed to tap "Add"
By this process you could set the printer now.



Tap here

Tap here



If you see this Screen, the Printer was surely added.